

# Public Document Pack

**Democratic Services Section  
Legal and Civic Services Department  
Belfast City Council  
City Hall  
Belfast  
BT1 5GS**

4th September 2025

## **MEETING OF PEOPLE AND COMMUNITIES COMMITTEE**

Dear Alderman/Councillor,

As previously notified to you, I enclose a copies of the reports for the following items to be considered at the meeting to be held at 5.15 pm on **Tuesday, 9th September, 2025.**

Yours faithfully,

John Walsh

Chief Executive

### **AGENDA:**

- (d) Strategic Cemeteries and Crematorium Working Group - Update  
(Pages 1 - 8)
- (a) Resources and Fleet Waste - Update  
(Pages 9 - 16)
- (b) Phase 2 of Kerbside Glass Expansion - agreement on streets  
(Pages 17 - 40)

This page is intentionally left blank

By virtue of paragraph(s) 3 of Part 1 of Schedule 6  
of the Local Government Act (Northern Ireland) 2014.

Document is Restricted

This page is intentionally left blank

Document is Restricted

This page is intentionally left blank



<b>Subject:</b>	Resources and Fleet Waste Update
<b>Date:</b>	09 September 2025
<b>Reporting Officer:</b>	Stephen Leonard, Director (Operational) CNS
<b>Contact Officer:</b>	John McConnell, City Services Manager (Resources and Fleet)

<b>1.0</b>	<b>Purpose of Report or Summary of main Issues</b>
1.1	To provide an update to People and Communities Committee on the work being carried out in relation to the overfilled bins and bin liner collection issues (Bin Safety Campaign).
<b>2.0</b>	<b>Recommendations</b>
2.1	The Committee is requested to note the contents of this report.
<b>3.0</b>	<b>Main report</b>
3.1	<p><b>Key Issues</b></p> <p>Members will recall this matter was discussed in June and members requested that updates were presented to P&amp;C Committee at the August and September meetings.</p> <p>This report provides an update to members on progress to date in relation to the campaign.</p>
3.2	<p>It should be noted that Corporate Communications have supported and continue to provide support and resource to Resources and Fleet the Service through the external and internal communications and awareness raising elements of the plan. The Project team engage with Corporate Communications regularly around the campaign, resident feedback and progress.</p>
3.3	<p>The Project Team and their Resource Advisor colleagues within Waste Management have produced an engagement plan based on the Implementation and Communications Plan approved by Council.</p>

	Key campaign dates:
3.4	<b><u>Monday 4 August</u></b> – the beginning of <b>Amber tagging</b> bedding in period for 8 weeks. Collections continue as normal (i.e. overfilled bins and bins with liners still collected) with warning tag placed on bins and reporting by crews. Resource Advisor Teams on ground raising awareness and messaging.
3.5	<b><u>Monday 29 September</u></b> – planned start date for the beginning of <b>Red tagging</b> collecting strictly to policy phase. Overfilled containers will be tagged and will not be collected, and instances reported. Temporary additional Special Waste Collection Operational teams (SWCO) to be engaged Resource Teams, OSS and Enforcement Teams will be deployed to targeting remaining hot spot areas.
3.6	Project Team progress as at time of writing of this update report:  <u>Overfilled and lined Bins – Domestic and Commercial Waste</u>
3.7	The following actions are ongoing or scheduled to be carried out as detailed. Summary of data and metrics around the campaign are below for reference. <ul style="list-style-type: none"> <li>• Additional Resource Advisor Staff have been deployed and began operating in Urban Belfast from Monday <b>21st July</b>. In terms of direct communications by the Resource Advisor Team and Waste Management colleagues, all is going to plan. <b>890 streets</b> equating to <b>34342 urban households</b> have received direct communications around the campaign.</li> <li>• The Project team have continued to hold <b>weekly briefings</b> with operations managers and assistant managers and their crews. Further briefings are planned at the end of August around the collection to policy (red) phase. These briefings will include Customer Hub colleagues, OSS and relevant FAQs will be reviewed and updated.</li> <li>• <b>Red tags (domestic) and red stickers (commercial)</b> have been ordered and delivered – these will form part of the briefings above and be circulated to stakeholders including the customer hub.</li> <li>• A <b>new Special Waste Operations Team (SWOT)</b> will be required from the end of September when we collect to policy. It is envisaged that these posts will be in situ for <b>15<sup>th</sup> September</b>, for training, in advance of the red collecting to policy phase on Monday 29 September.</li> </ul>



- **Translations** - the 5 versions required have been printed and are in hand for staff on the ground, including Outreach Teams. See Appendix 1 for examples.
- **Performance/Campaign impact** – In the first 2 days of the campaign, we experienced some teething problems. This did lead to small instances of non-collection at a number of sites and location which were corrected very quickly. After day 3, operationally, the campaign began to bed in well with crews on the ground and has also highlighted or magnified some of the “business as usual” issues at some of collection sites and areas e.g. overfilled euro bins and lidless euro bins at apartments. These issues are relatively small in number and being noted in issues log and issues managed case by case by Waste Collection and via colleagues in Waste Management. Issues raised to date are either resolved or in hand and we expect to see more of these as we go through the campaign.
- The comms and engagement on the ground is having an impact. Resource Advisor **home visits are up significantly as are orders for boxes and bins**. Increases in orders and requests for service show a positive trend around better recycling messaging. The WM section is keeping close track of container stocks and orders coming in. Levels are currently comfortable in the context of increased demand and further orders are in progress to replenish stocks. Waste Management will continue to monitor this closely.
- At the time of writing this report, 4 full weeks data has been gathered. Graph 1 below shows tag use/consumption for the first 4 weeks of the amber phase. **The average rate of tagging vs number of collections during the period equates to less than 2% overall**. The project team are content with progress to date and will continue to monitor the data, which is summarised in more granular detail in Table 1.
- The Service introduced the quick report of **workplace violence** to crews at the start of the campaign and as of 29 August 2025, there were **no reports made**.
- **Customer Hub Feedback** - There was a spiked increase in customer contact at the start of the amber tagging period due to teething issues with tags in some areas, however returned to normal levels quickly when resolved with only 14 service requests attributed to the bin safety campaign logged on CRM Dynamics during the month of August. A small number of residents have reported that they were not aware of the campaign prior to receiving a tag on their bin. Two comments have been recorded about the

3.8

campaign to date, with residents raising concerns about bins stored on streets/entries being overfilling by neighbours and bins being returned to their bin collection point by crews. The use of Report it app by squads to report matters impacting the collection of bins continues to be critical to assist the hub with handling customer contact. It is anticipated that customer contact will increase when the red tagging commences and the customer hub are working with Resource and Fleet Collections to ensure preparedness for the handling of enquiries this is expected to generate.

Graph 1 – summary of amber tag use cycle 1 and cycle 2 (4 weeks)

3.9

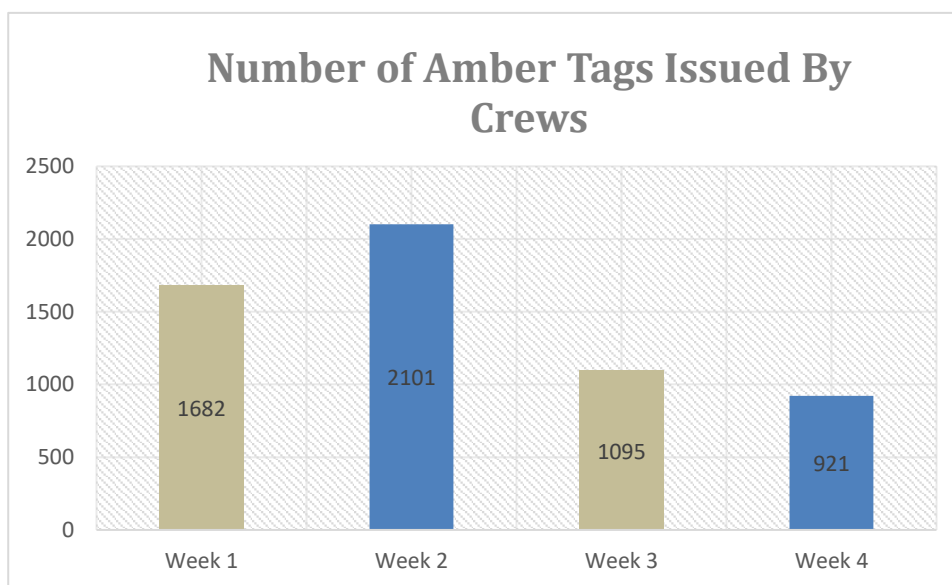


Table 1 – headline summary of campaign metrics

3.10

	Week 1	Week 2	Week 3	Week 4
Number of Amber Tags Issued By Crews	1682	2101	1095	921
Percentage of Bins Emptied Tagged	2.08%	2.59%	1.35%	1.14%
WPV Reports	0	0	0	0
Total number of houses posted	19587	23917	28104	34342
Number of Black Bins Ordered	134	162	109	71
Number of Boxes Ordered	564	479	321	215

3.11

**Corporate Communications summary** of campaign feedback so far includes:

Social media content has already reached over 300,000 views, with widespread media coverage achieved. This has included TV news on both BBC and UTV.

The most successful post alone generated 245,000 views and 1,175 interactions (comments, likes, and reactions).

	<div> <div> <div>Overview</div> <div> <div>Views <sup>👤</sup></div> <div>245,895</div> </div> <div> <div>Reach <sup>👤</sup></div> <div>93,568</div> </div> <div> <div>Interactions <sup>👤</sup></div> <div>1,175</div> </div> <div> <div>Link clicks <sup>👤</sup></div> <div>2</div> </div> </div> <div> <div> <div>📊 This post received more views compared to your recent Facebook posts.</div> <div> <div>Views <sup>👤</sup></div> <div>245,895</div> </div> <div> <div>Total</div> <div>Followers</div> </div> <div> <div>300K</div> <div>200K</div> <div>100K</div> <div>0</div> </div> <div> <div>15m</div> <div>9h</div> <div>1d 6h</div> <div>7d</div> </div> <div> <div>— This post's views</div> <div>— Your typical post views</div> </div> </div> </div> <div> <div>Feed preview</div> <div> <div> <div>Belfast City Council</div> <div>Published by Hootsuite · 29 July at 16:00 · 🌐</div> </div> <div>Important bin collection update. ... See more</div> <div> <div> <div>leaving bins</div> <div>ut for collection</div> </div> <div> <div>our collection day, make sure your bin:</div> <div> <div> <div>7am</div> <div>Is out by 7am</div> </div> <div> <div>7pm</div> <div>Is brought back in by 7pm*</div> </div> <div> <div>6</div> <div>Has your house number marked on</div> </div> </div> <div> <div> <div>not overfilled and lid is fully closed</div> <div>Has no extra bags or waste beside it</div> <div>Doesn't have a bin liner</div> </div> <div> <div>Follow the tips if you have recycling or wheelie bins at home today</div> </div> </div> </div> </div> </div></div></div>
3.12	<p>Corporate Communications will continue to share regular reminder posts. As we move closer to the red tagging stage at the end of September, messaging will be adapted to highlight what red tags signify and why they are important. We plan to issue another media note ahead of the red tagging phase to generate a fresh wave of coverage.</p>
3.13	<p><b><u>Financial &amp; Resource Implications</u></b></p> <p>There are no financial implications associated with this report. All costs will be covered from within existing revenue estimates.</p> <p><b><u>Equality or Good Relations Implications /Rural Needs Assessments</u></b></p>
3.14	<p>There are no equality or good relations implications associated with this report.</p>
4.0	<p><b>Appendices – Documents Attached</b></p> <p>Appendix 1 – Translated campaign material</p>

This page is intentionally left blank

## Appendix 1 – translations of campaign material

**Belfast City Council**

### Wystawianie pojemników do odbioru odpadów

Od sierpnia 2025 nowe zawieszki na pojemniki

Te same zasady dotyczą też domowych pojemników recyklingowych na kółkach lub bez kółek.

W dniu odbioru należy dopilnować, aby pojemnik był:

- 7am** wystawiony przed godz. 7:00
- 7pm** zabrany z powrotem do godz. 19:00\*
- 6** oznaczony numerem domu

**Nieprzepełniony i miał całkowicie zamkniętą pokrywę**

**Niewyłożony foliowym workiem**

**Nieobstawiony dodatkowymi workami lub odpadami**

Przestrzeganie tych zasad zapewni bezpieczeństwo naszym pracownikom podczas opróżniania pojemników i ułatwi utrzymanie czystości ulic i osiedli.

Od sierpnia 2025 r. pojemnik z nieodmkniętą pokrywą lub wyłożony workiem foliowym zostanie oznaczony pomarańczową zawieszką przypominającą o tych zasadach.

**Pojemnik przepełniony?**

- Segreguj odpady właściwie i oddawaj jak najwięcej do recyklingu – pozwoli to oszczędzić miejsce w pojemniku na odpady zmieszane i całkowicie zamknąć pokrywę.
- Zapiąć na plastik duże opakowania i torby.
- Korzystać z naszych punktów recyklingu i zbiórki odpadów.
- Zamów bezpłatny odbiór odpadów wielkogabarytowych (dłużych przedmiotów domowych)

**Jeśli ktoś czyszczy Twój pojemnik, przypomnij, aby nie używać worków!**

**Masz pytanie?**  
Zadzwoń: 028 9027 0230  
Odwiedź: [www.belfastcity.gov.uk/bins](http://www.belfastcity.gov.uk/bins)

\* Pozwoli to uniknąć cudzych odpadów w pojemniku. Jeśli pojemnik nie został opróżniony i nie ma na nim zawieszki wywołującej przyczynę, należy zgłosić na stronie [belfastcity.gov.uk/bins](http://belfastcity.gov.uk/bins) lub zadzwonić pod numer 028 9027 0230 i wystawić pojemnik ponownie przed godz. 7:00 następnego dnia.

**Belfast City Council**

### Kaip palikti šiukšliadėžes surinkimui

Nuo 2025 rugpjūčio – su naujomis šiukšliadėžių etiketėmis

Vadovaukitės šioms patarimais, jei namuose turite perdirbimoms atliekoms skirtų dėžių ar dėžių su ratukais.

Šiukšlių surinkimo dieną įsų šiukšlių dėžė:

- 7am** Turi būti išvežta iki 7:00 val.
- 7pm** Turi būti parvežta namo iki 19:00 val\*
- 6** Ant jos turi būti nurodytas įsų namo numeris

**Nėra perpildyta ir gerai uždaryta dangtis**

**Ją nėra įliestas maišas**

**Šalia jos nėra kitų maišų ar šiukšlių**

Jeil laikysitės šių nurodymų, šiukšles surenkantis personalas galės jaustis saugiau, be to, tai užtikrins geresnę sąvarą gatvėse ir bendruomenėse.

Nuo 2025 m. rugpjūčio mėn., norėdami priminti apie galiojančias taisykles, geltona etiketė pažymėsime šiukšlių dėžes, kurios nebus visiškai uždarytos arba kuriose bus įliestas maišas.

Jeil ir toliau perpildysite šiukšlių dėžę arba tiesiog ją maišą, nuo 2025 m. rugsėjo mėn., pažymėsime įsų šiukšlių dėžę raudona etikete ir neįvesime įsų šiukšlių, kol neišimsite įlieto maišo ir visiškai neuždarysite dangčio.

**Užsakydami šiukšliadėžes valymo paslaugą, priminkite, kad jį nėra liestu maišo!**

**Per daug šiukšlių šiukšliadėžėje?**

- Tinkamai rūšiuokite atliekas ir kuo daugiau atidėkite perdirbimui – taip sutaupysite vietos savo bendrų šiukšlių dėžėje ir leisite dangčiui visiškai užsidaryti.
- Didelius daiktus ir maišus suplokite.
- Naudokitės atliekų perdirbimo ir viešosiomis atliekų surinkimo vietomis.
- Užsisakykite nemokamą didelių gabaritų daiktų surinkimo paslaugą (dideliems namų ūkio daiktams).

**Norite paklausti?**  
Skambinkite tel. 028 9027 0230  
Apsilankykite [www.belfastcity.gov.uk/bins](http://www.belfastcity.gov.uk/bins)

\* Taip siekiama užtikrinti, kad įsų šiukšliadėžė neprimestų šiukšlių kiti žmonės. Jei įsų šiukšlių dėžė nebuvo ištuštinta ir nebuvo pažymėta etikete, apie tai informuokite mūsų internetu: [belfastcity.gov.uk/bins](http://belfastcity.gov.uk/bins) arba paskambinkite tel. 028 9027 0230, o savo šiukšliadėžę dar kartą išvežkite iki kitos dienos 7:00 val.

**Belfast City Council**

### Deixar os caixotes do lixo para a recolha

Incluir novas etiquetas para os caixotes do lixo a partir de agosto de 2025

Siga estas dicas se também tiver caixas de reciclagem ou de rodas em casa.

No dia da recolha, certifique-se de que o seu caixote do lixo:

- 7am** Está na rua às 07h00
- 7pm** É recolhido até às 19h00\*
- 6** Tem o número da sua casa marcado

**Não está demasiado cheio e a tampa está completamente fechada**

**Não tem um saco de lixo**

**Não tem sacos ou resíduos extra ao seu lado**

O cumprimento destas passas manterá o nosso pessoal seguro quando esvaziar os caixotes do lixo e apoiará ruas e comunidades mais limpas.

A partir de agosto de 2025, se a tampa do seu caixote do lixo não estiver fechada ou se tiver utilizado um saco de lixo, colocaremos uma etiqueta ambar no seu caixote para relembrar destas regras.

A partir do final de setembro de 2025, se continuar a encher o seu caixote do lixo com saco de lixo, colocaremos uma etiqueta vermelha e não o esvaziaremos até que retire o saco de lixo e se certifique de que a tampa está totalmente fechada.

**Se pedir a alguém que limpe o seu caixote do lixo, lembre-o de não utilizar sacos de lixo!**

**O caixote do lixo está demasiado cheio?**

- Seperar os seus resíduos corretamente e recicle o máximo que puder – isto poupará espaço no seu caixote do lixo geral e certifique-se de que a tampa fecha completamente.
- Achate os objetos grandes e os sacos.
- Utilize os nossos locais de reciclagem e do lazer cívico.
- Marque uma recolha gratuita de resíduos volumosos (para artigos domésticos de maiores dimensões)

**Tem uma pergunta?**  
Ligue o número 028 9027 0230  
Consulte: [www.belfastcity.gov.uk/bins](http://www.belfastcity.gov.uk/bins)

\* Isto é para evitar que outro lixo seja colocado no seu caixote do lixo. Se o seu caixote do lixo não tiver sido esvaziado e não tivermos colocado uma etiqueta a informá-lo do motivo, comuníque-o online em: [belfastcity.gov.uk/bins](http://belfastcity.gov.uk/bins) ou ligue o número 028 9027 0230 e deixe o caixote do lixo novamente exposto até às 07h00 do dia seguinte.

**Belfast City Council**

### Scoaterea pubelelor pe stradă pentru colectarea deșeurilor

Plus etichete pentru pubele începând din august 2025

Umați regulile de mai jos dacă aveți acasă pubele sau cutii pe roți pentru deșeurile reciclabile.

În ziua de colectare a deșeurilor, verificați ca pubele:

- 7am** Să fie lăsată pe stradă înainte de ora 7:00
- 7pm** Să fie luată de pe stradă înainte de ora 19:00\*
- 6** Să aibă trecut pe ea numărul dvs. de casă

**Să nu fie prea plină și să aibă capacul închis etanș**

**Să nu fie captusită cu un sac pentru gunoi**

**Să nu aibă alături de ea alți saci sau alte deșeurile**

Făcând cele de mai sus, veți contribui la siguranța angajaților noștri când golesc pubelele, și la păstrarea curăteniei pe străzile și în comunitățile noastre.

Cu începere din august 2025, dacă pubele dvs. nu are capacul închis sau dacă ați captusit-o cu un sac pentru gunoi, vom adăuga o etichetă portocalie pentru a vă reaminti aceste reguli.

Începând de la sfârșitul lui septembrie 2025, dacă continuați să captușiți sau să umpleți excesiv pubele, vom pune pe ea o etichetă roșie și o vom golii numai după ce scoateți sacul cu care este captusită și închideți etanș capacul.

**Dacă folosiți servicii de igienizare a pubelelor, reamintiți furnizorilor să nu o captusească cu saci!**

**Pubele este prea plină?**

- Sortați-vă deșeurile cu atenție și reciclați în măsura în care puteți – veți economisi astfel spațiu în pubele pentru deșeurile menajere astfel încât să puteți închide cu ușurință capacul.
- Apliați-vă deșeurile de dimensiuni mari.
- Folosiți punctele locale de colectare și reciclare.
- Aranjați colectarea gratuită a deșeurilor voluminoase (pentru articole de uz casnic de dimensiuni mai mari).

**Aveți vreo întrebare?**  
Sunajți la 028 9027 0230  
Vizitați [www.belfastcity.gov.uk/bins](http://www.belfastcity.gov.uk/bins)

\* Pentru ca pubele dvs. să nu fie folosită de alte persoane. Dacă pubele nu a fost golită și nu am lăsat o etichetă să vă spunem de ce, sesizați problema online la [belfastcity.gov.uk/bins](http://belfastcity.gov.uk/bins) sau sunați la 028 9027 0230, și scoateți-o din nou pe stradă a doua zi înainte de ora 7:00.





Belfast  
City Council

French

## Sortir les bacs en vue de la collecte

y compris les nouvelles étiquettes à bacs,  
à partir d'août 2025



Suivez aussi ces  
conseils si vous  
avez des boîtes de  
recyclage ou des  
boîtes à roues à  
votre domicile.

Le jour de la collecte, veillez à :



Sortir votre bac avant  
7 heures du matin



Le rentrer avant  
19 heures\*



Inscrire le numéro de votre  
maison sur le bac



Ne pas trop le remplir et  
bien refermer le couvercle



Ne pas utiliser de  
sac doublure de bac



Ne pas poser de sacs ni de  
déchets supplémentaires  
à côté du bac

En suivant ces conseils, vous contribuerez  
à la sécurité de notre personnel lors  
du ramassage des poubelles, et à la  
propreté des rues et des quartiers.

À partir d'août 2025, si le couvercle de  
votre poubelle n'est pas fermé ou si vous  
avez utilisé un sac doublure de bac, une  
étiquette orange sera apposée sur votre  
poubelle pour vous rappeler ces règles.

À partir de fin septembre 2025, si vous  
continuez de mettre un sac doublure ou  
de remplir excessivement votre poubelle,  
une étiquette rouge sera apposée sur votre  
poubelle et celle-ci ne sera plus vidée tant  
que vous n'aurez pas retiré le sac doublure  
et vérifié que le couvercle est bien fermé.



Si une autre personne est  
chargée de nettoyer votre  
poubelle, rappelez-lui qu'il  
ne faut pas utiliser de sac  
doublure de poubelle

### Poubelle trop pleine ?

- Triez correctement vos déchets et recyclez autant  
que possible. Cela vous permettra de gagner de la  
place dans votre poubelle de déchets ménagers  
et de vous assurer que le couvercle se referme  
complètement.
- Aplatissez les objets volumineux et les sacs
- Utilisez nos sites de recyclage et nos centres de  
collecte des déchets
- Réservez la collecte gratuite d'encombrants (pour les  
articles ménagers plus volumineux)

Pour toutes  
questions

Appelez le 028 9027 0230  
Visitez [www.belfastcity.gov.uk/bins](http://www.belfastcity.gov.uk/bins)



\* Afin d'éviter que d'autres déchets ne soient placés dans votre poubelle, si votre bac n'a pas été vidé et qu'aucune  
étiquette n'y est apposée pour vous en expliquer les raisons, veuillez le signaler en ligne à [belfastcity.gov.uk/bins](http://belfastcity.gov.uk/bins)  
ou appelez le 028 9027 0230, et sortez à nouveau votre bac avant 7 heures du matin le lendemain.



Subject:	Kerbside Glass Expansion – Phase Two
Date:	9 September 2025
Reporting Officer:	Stephen Leonard, Operational Director, City & Neighbourhood Services
Contact Officer:	John McConnell – City Services Manager Resources & Fleet

<b>Restricted Reports</b>	
Is this report restricted?	Yes <input type="checkbox"/> No <input checked="" type="checkbox"/>
If Yes, when will the report become unrestricted?	
After Committee Decision	<input type="checkbox"/>
After Council Decision	<input type="checkbox"/>
Some time in the future	<input type="checkbox"/>
Never	<input type="checkbox"/>

<b>Call-in</b>	
Is the decision eligible for Call-in?	Yes <input checked="" type="checkbox"/> No <input type="checkbox"/>

<b>1.0</b>	<b>Purpose of Report or Summary of main Issues</b>
	The purpose of this report is to inform members of phase two of the kerbside glass expansion scheme.
<b>2.0</b>	<b>Recommendations</b>
2.1	Members are requested to approve the street list which will make up phase two of the kerbside glass expansion scheme, as outlined in the report.
<b>3.0</b>	<b>Main report</b>
3.1	In 2024, the Resources and Fleet Service was successful in obtaining capital funding under the DAERA Household Waste Collaborative Change Programme with regard to the expansion of its kerbside glass collections scheme.

3.12	This funding, combined with the Council's capital programme, resulted in the implementation of phase one of this scheme which delivered a Lorna glass collection scheme to 23,000 households from Q4 2024/25. While initial scheme participation data is below expectations, the tonnage captured is on target, with approximately 35 kg/hh/pa equating to around 800 tonnes of glass per annum. The Service is also working on contingency measures for vehicle breakdown to ensure a more consistent approach to kerbside glass collections across the city.
3.13	The Service is now planning for phase two of the project which involves a further expansion to another 23,000 households. The Implementation phase involves the recruitment of collection crews, procurement of containers for both individual households and apartment blocks, procurement and leasing of vehicles, communication of the scheme to the selected households, assessment of apartments (if any within the selected areas) and finally delivery of containers followed by first collections.
3.14	The scheme roll-out commences with a letter drop to households within the agreed phase two catchment area. This letter will outline the key aspects of the initiative along with practical information such as collection day, frequency, accepted materials and start date. Within seven days of receiving the letter, households will be issued with a kerbside box and lid for the presentation of their glass containers at the kerbside. An information leaflet will also be included within the kerbside boxes reminding residents on the salient points of the scheme. Kerbside collections will then commence within ten working days of receiving the kerbside box.
3.15	Given the lead times associated with a number of these activities, in particular the purchase and receipt of containers, and mindful of the potential clash with collections arrangements for the Christmas 2025 season, it is envisaged that project implementation will commence in January and will be completed by March 2026.
3.16	Detailed route planning is still being finalised but a proposed list of streets to be serviced under phase two can be found at Appendix 2. Members are requested to approve the street lists so that further detailed planning can be completed. Members will also note that the agreement of phase two will by default result in the final phase three being those households still not receiving a kerbside glass scheme and subject to financial approval via the rates setting exercise, the final roll-out will include these households in the 26/27 financial year.
3.17	The Service will continue to keep Members apprised of the progress of the scheme through the Council's usual governance procedures.
4.1	<p><b><u>Financial and Resource Implications</u></b></p> <p>The capital costs associated with phase two of the glass kerbside expansion scheme will be met by both the Council's capital programme and DAERA's Household Waste Recycling Collaborative Change Fund. Revenue costs will be met through the Service's revenue estimates.</p>
4.2	<p><b><u>Equality or Good Relations Implications/Rural Needs Assessment</u></b></p> <p>The project has undergone equality impact and rural needs assessments. There are no good relations assessments associated with this project.</p>



<b>5.0</b>	<b>Appendices</b>  Appendix 1 – Maps showing scheme coverage and proposed street list for phase two expansion of kerbside glass collections.
<b>6.0</b>	<b>Abbreviations</b>  None

DRAFT

This page is intentionally left blank

## Appendix 1 – Kerbside Glass Expansion Phase 2 2025/26

Figure 1: Map of households without kerbside glass collection scheme

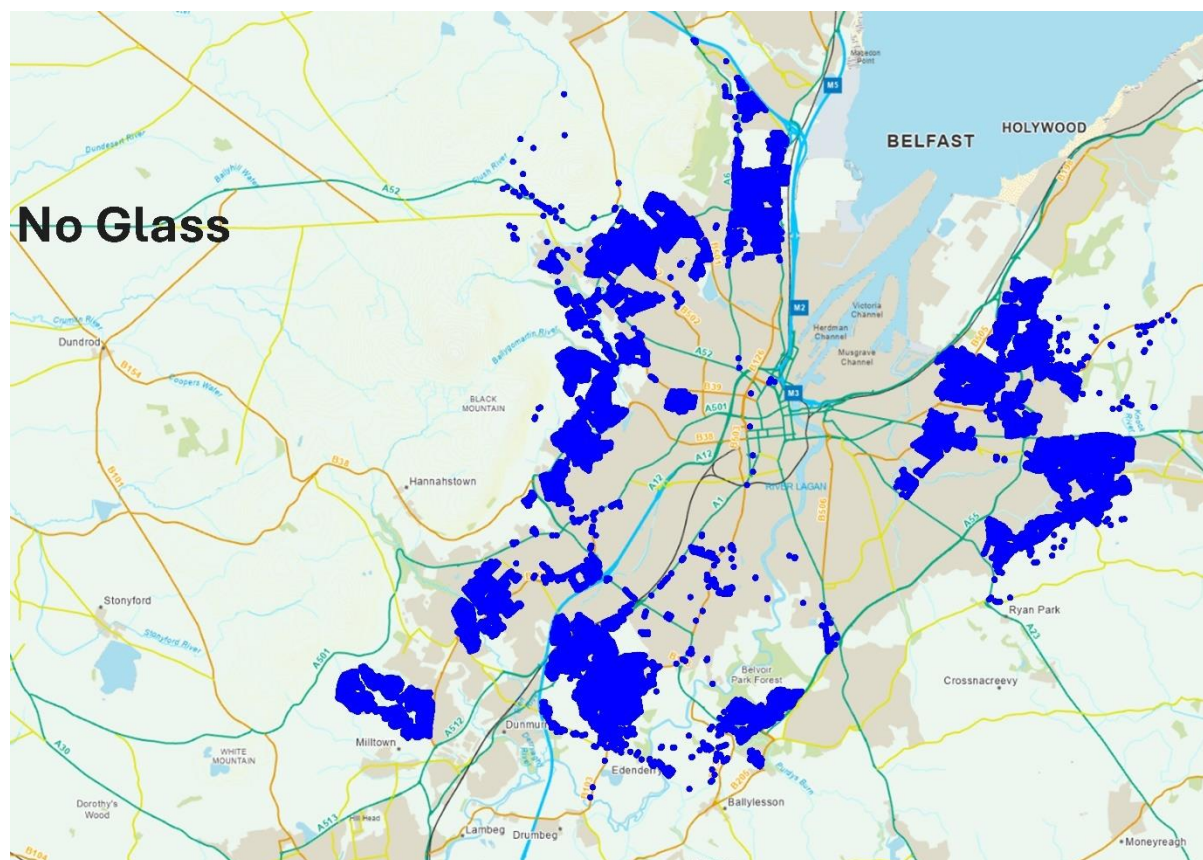


Figure 2: Map of proposed phase 2 expansion 2025/26

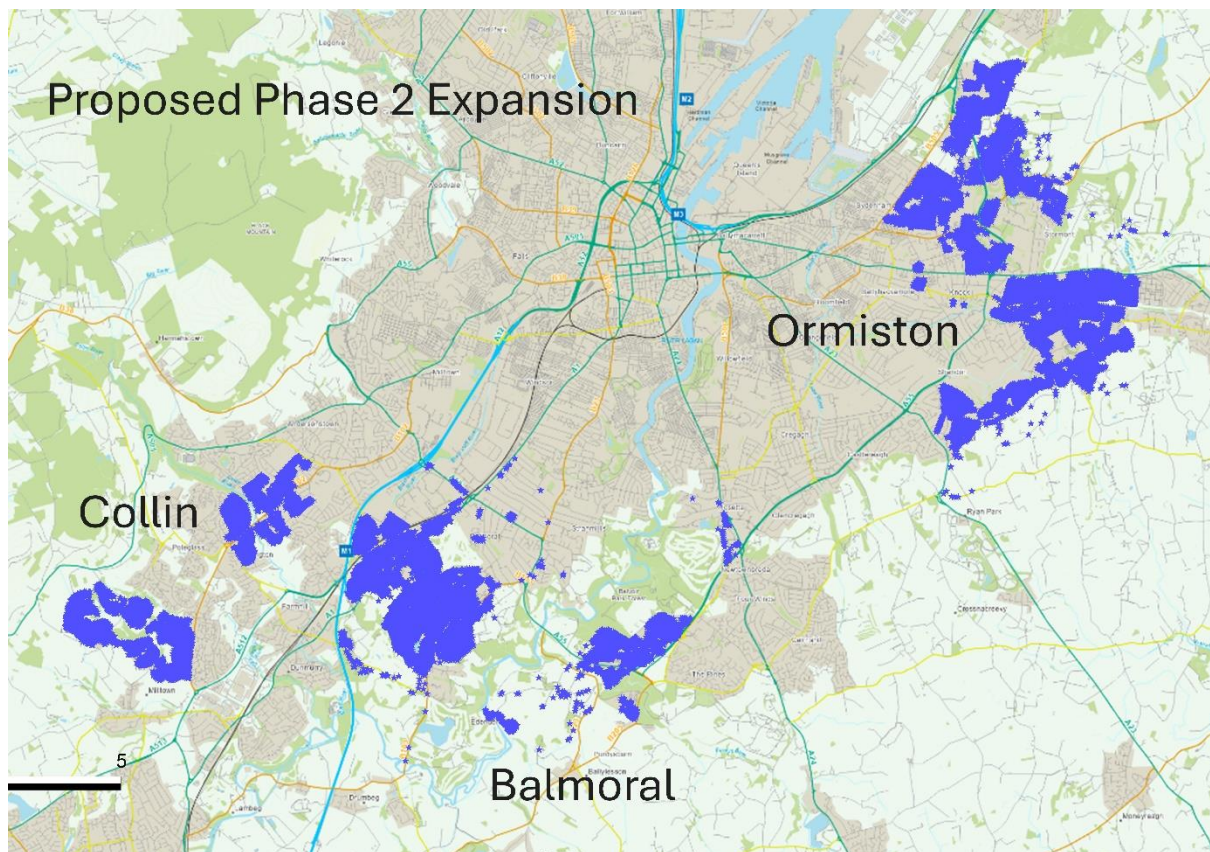




Figure 3: Existing kerbside glass collection provision plus proposed Phase 2

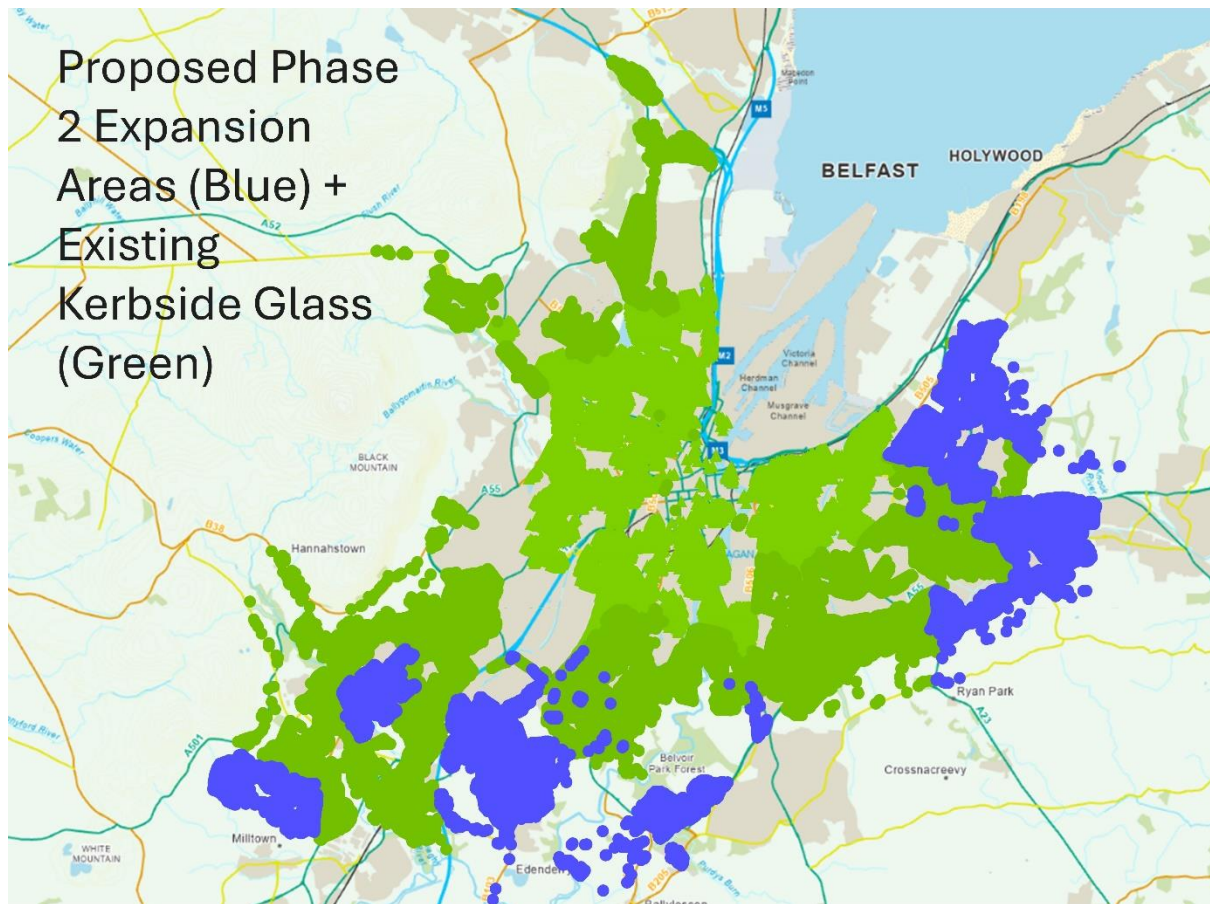


Table1: Proposed phase 2 expansion by District Electoral Area (green blocks)

DEA	Households
Balmoral	8236
Black Mountain	4389
Botanic	522
Castle	5706
Collin	4565
Court	5215
Oldpark	3900
Ormiston	10531
Titanic	2479
#N/A	79
(blank)	
<b>Grand Total</b>	<b>45622</b>

## Proposed Phase 2 Expansion Street List

### A. Balmoral

Balmoral	8236
aberfoyle gardens, belfast	11
aberfoyle park, belfast	10
aboo court, belfast	8
altnacreeva avenue, belfast	40
altnacreeva close, belfast	24
annadale avenue, belfast	2
archdale drive, belfast	36
archdale park, belfast	23
ardmore avenue, finaghy, belfast	55
ardmore court, finaghy, belfast	4
ardmore drive, belfast	24
ardmore park south, belfast	20
ardmore park, finaghy, belfast	57
ash grove, belfast	9
ashton avenue, belfast	24
ashton park, belfast	63
ballycairn close, belfast	39
ballycairn drive, belfast	25
ballylesson road, belfast	15
ballynahatty road, belfast	27
balmoral avenue, belfast	3
balmoral court, belfast	40
balmoral park gardens, finaghy, belfast	16
balmoral park, finaghy, belfast	21
bawnmore road, belfast	1
beechmount park, belfast	12
belvoir close, belfast	16
belvoir crescent, belfast	30
belvoir drive, belfast	220
benmore court, belfast	23
benmore drive, belfast	164

benmore walk, belfast	11
bradford place, belfast	11
castleboy avenue, belfast	12
castlecoole park, belfast	90
castlecoole walk, belfast	16
castledillon road, belfast	85
castlehume gardens, belfast	66
castlerobin road, belfast	88
castleward park, belfast	38
chippendale court, belfast	13
chippendale gardens, belfast	13
church road, newtownbreda	51
cloghan gardens, finaghy, belfast	2
coleshill gardens, belfast	14
cranfield gardens, belfast	2
crevenish walk, belfast	16
de beere court, belfast	16
diamond avenue, belfast	3
diamond gardens, finaghy, belfast	74
diamond gate	11
diamond grove, belfast	7
donegall park, belfast	29
doon end, belfast	16
downhill avenue, belfast	45
downhill walk, belfast	6
drumart drive, belfast	184
drumart gardens, belfast	9
drumart green, belfast	19
drumart square, belfast	8
drumart walk, belfast	21
drumcairn close, belfast	24
drummond manor, belfast	6
dub lane, malone upper, belfast	39
dunmurry lane, dunmurry	1
dunseverick avenue, belfast	20
dunseverick court, belfast	12
edenderry cottages, belfast	37
edenderry road, belfast	2
edenderry village, belfast	100
erinvale avenue, belfast	85
erinvale drive, belfast	104
erinvale gardens, belfast	24
erinvale park, belfast	24
fairway avenue, belfast	23
fairway crescent, belfast	10
fairway drive, belfast	7

fairway gardens, malone, belfast	12
finaghy park central, belfast	62
Finaghy Park Gardens	15
finaghy park north, belfast	18
finaghy park south, belfast	16
finaghy road north, belfast	44
finaghy road south, belfast	172
finbank court, belfast	13
finbank gardens, belfast	17
finch close, belfast	28
finch court, belfast	9
finch grove, belfast	40
finch place, belfast	9
finch way, belfast	21
findon gardens, belfast	63
findon grove, belfast	9
findon place, belfast	6
finnis close, belfast	32
finnis drive, belfast	16
finnis grange, belfast	15
finwood court, belfast	3
finwood park, belfast	21
foresthill view, belfast	9
garron crescent, belfast	52
geeragh place, belfast	13
gilchrist view	6
glenarm square, belfast	36
grangeville drive, belfast	2
grangeville gardens, belfast	57
grays park avenue, belfast	50
grays park court, belfast	5
grays park drive, belfast	22
grays park gardens, belfast	12
grays park, belfast	44
greenview park, belfast	12
greenwich mews, belfast	16
greystown avenue, belfast	129
greystown close, belfast	4
greystown park, belfast	63
Haddo Crescent	6
Haddo Lane	2
Haddo Place	5
haddo street, belfast	22
harberton park gardens, malone upper, belfast	12
hillmount court, belfast	10
hillmount gardens, belfast	62



hollymount court, belfast	16
hollymount, belfast	51
inishowen drive, belfast	130
ishbel gardens	8
Ishbel Mews	15
katrine park, belfast	47
killard place, belfast	22
killynether gardens, belfast	33
killynether walk, belfast	32
kilwarlin crescent, belfast	71
kilwarlin walk, belfast	52
kinbane way, belfast	16
kings court, belfast	14
kings hall lane	16
kinnegar road, belfast	29
kirkistown avenue, carryduff	18
kirkistown walk, belfast	20
kirklowe drive, belfast	13
lady ishbel avenue, belfast	13
lakeside drive, belfast	49
larkfield avenue, belfast	12
lille park, belfast	40
linen mill close, belfast	9
linen mill grove, belfast	21
linkview park, belfast	13
lisburn road, belfast	107
locksley drive, finaghy, belfast	5
locksley gardens, belfast	44
locksley grange, belfast	8
locksley parade, belfast	38
locksley park, belfast	179
locksley place, belfast	13
longacre, belfast	4
mahee close, belfast	56
malfin court, belfast	22
malfin drive, belfast	92
malone gate, belfast	6
malone heights, belfast	42
malone park gardens, belfast	16
malone ridge, belfast	20
malone road, belfast	17
malone view avenue, belfast	14
malone view crescent, belfast	5
malone view park, belfast	21
malone view road, belfast	38
malton court, belfast	24

malton drive, belfast	64
malton rise, belfast	26
malton vale, belfast	32
malwood close, belfast	6
malwood park, belfast	12
marguerite park, belfast	28
millburn court, belfast	25
milltown hill, belfast	3
minnowburn drive, belfast	20
minnowburn gardens, belfast	24
minnowburn mews, belfast	47
minnowburn terrace, belfast	4
mount aboo park, belfast	25
moyle walk, belfast	54
musgrave park court, belfast	29
newforge lane, belfast	2
newtownbreda road, belfast	1
northlands park, belfast	11
old coach avenue, belfast	39
old coach gardens, belfast	15
old coach lane, belfast	5
old coach road, belfast	32
old milltown road, belfast	56
olde forge manor, belfast	59
orchardville avenue, belfast	44
orchardville crescent, belfast	119
orchardville gardens, belfast	97
orlock square, belfast	22
ormeau road, ormeau	29
ormonde avenue, belfast	6
ormonde park, belfast	70
orpen avenue, belfast	36
orpen drive, belfast	39
orpen park, belfast	57
orpen road, belfast	63
park view, belfast	12
phennick drive, belfast	17
piney way, belfast	3
porter park, belfast	26
priory gardens, finaghy, belfast	10
priory park, belfast	80
ramore park, belfast	36
rathmore avenue, belfast	22
rathmore gardens, belfast	16
rathmore park, belfast	20
redhill manor, belfast	16

regents wood, belfast	17
richmond mews, belfast	4
ruby cottages, belfast	4
saintfield road, belfast	5
sicily park, belfast	200
south crescent, belfast	33
st ellens terrace, belfast	4
st ellens, belfast	12
stockmans lane, belfast	42
strathallan park, belfast	10
strathyre park, belfast	20
the close, belfast	12
the crescent, belfast	44
the hawthorns, finaghy, belfast	10
the hill, belfast	26
the laurels, belfast	4
the vines, belfast	27
torr way, belfast	52
trossachs drive, belfast	112
trossachs gardens, belfast	18
trossachs park, belfast	10
upper lisburn road, belfast	302
upper malone close, belfast	7
upper malone crescent, belfast	19
upper malone gardens, belfast	31
upper malone park, belfast	65
upper malone road, belfast	80
upton avenue, belfast	18
upton park, belfast	24
wedderburn avenue, belfast	42
wedderburn gardens, belfast	24
whinnyhill drive, belfast	16
william alexander park, belfast	53
willisfield avenue, belfast	23
willisfield gardens, belfast	16
willisfield park, belfast	12

## B. Collin

Collin	4565
altan avenue, dunmurry	14
altan close, dunmurry	10
altan drive, dunmurry	26
altan gardens, dunmurry	18
altan grove, dunmurry, dunmurry	12
altan park, dunmurry	8
altan place, dunmurry	15
altan walk, dunmurry	12
beechlawn avenue, dunmurry	36
benwee park, belfast	4
carnanmore park, belfast	110
cloona avenue, dunmurry	10
cloona crescent, belfast	32
cloona park, dunmurry, dunmurry	100
cois cluana park, belfast	6
derryveagh close, belfast	19
derryveagh drive, belfast	88
derryveagh mews, belfast	4
donegore gardens, belfast	28
doon cottages, belfast	5
doon road, belfast	93
dunmurry lane, dunmurry	32
erris grove, belfast	14
filbert drive, dunmurry	23
glendowan avenue, dunmurry	21
glendowan close, dunmurry, dunmurry	9
glendowan grove, dunmurry, dunmurry	13
glendowan park, dunmurry	7
glenfearna avenue, dunmurry	13
glenfearna gardens, dunmurry	23
glenfearna park, dunmurry	9
glenfearna wood, dunmurry, dunmurry	22
glengoland avenue, dunmurry	67

glengoland crescent, dunmurry	21
glengoland gardens, dunmurry	54
glengoland parade, dunmurry	48
glengoland park, dunmurry, dunmurry	70
glenview terrace, belfast	12
hazel close, dunmurry, belfast	21
hazel crescent, belfast	20
hazel drive	12
hazel glen, belfast	19
Hazel Heights	18
hazel link	10
hazel mews	9
hazel pass	4
hazel view, belfast	15
Hazel Way	2
helens wood court, dunmurry, dunmurry	45
helens wood, dunmurry	41
horn drive, belfast	139
horn walk, belfast	20
kells avenue, belfast	24
kilbourne park, dunmurry	10
lagmore avenue, belfast	76
lagmore dale, dunmurry	168
lagmore downs, dunmurry	66
lagmore drive, dunmurry, belfast	51
lagmore gardens, dunmurry	15
lagmore glen, dunmurry	162
lagmore grove, dunmurry, dunmurry	86
lagmore heights, dunmurry	23
lagmore meadows, dunmurry, dunmurry	240
lagmore rise, dunmurry	24
lagmore view crescent, dunmurry	23
lagmore view gardens, dunmurry	25
lagmore view lane, dunmurry	19
lagmore view manor, dunmurry	30
lagmore view road, belfast	67
lagmore view way, dunmurry	26
lagmore view, lagmore	7
lenadoon avenue, belfast	38
lenadoon walk, belfast	15
margaretta court, dunmurry	12
margaretta crescent, belfast	14
margaretta park, dunmurry	52
mizen gardens, belfast	10
mount eagles avenue, lagmore	143
mount eagles close, dunmurry	22

mount eagles court, dunmurry, dunmurry	10
mount eagles crescent, dunmurry	56
mount eagles drive, belfast	48
mount eagles glen, dunmurry	103
mount eagles grove, dunmurry	10
mount eagles lane, dunmurry	6
mount eagles link, dunmurry	13
mount eagles lodge, dunmurry	57
mount eagles mews, dunmurry	10
mount eagles park, dunmurry	51
mount eagles pass, dunmurry	2
mount eagles square, dunmurry	74
mount eagles walk, dunmurry	17
mount eagles way, lagmore	63
oranmore drive, belfast	21
ringford crescent, belfast	40
ringford park, belfast	11
rinnalea close, belfast	6
rinnalea gardens, belfast	40
rinnalea grove, belfast	19
rinnalea walk, belfast	10
rinnalea way, belfast	9
rosgoill drive, belfast	21
rosgoill gardens, belfast	23
rosgoill park, belfast	91
shaws avenue, belfast	19
shaws court, belfast	6
shaws park, belfast	10
shaws place, belfast	3
stewartstown avenue, belfast	42
stewartstown gardens, belfast	10
stewartstown mews, belfast	4
stewartstown park, belfast	39
stewartstown road, belfast	4
suffolk avenue, belfast	21
suffolk crescent, belfast	68
suffolk drive, belfast	26
suffolk parade, belfast	12
suffolk road, belfast	19
teeling avenue, dunmurry	49
teeling grove, dunmurry	14
teeling view, dunmurry	16
tildarg avenue, belfast	102
trenchard, belfast	21
upper malone road, belfast	7
viewfort park, dunmurry	40

white glen, lagmore, dunmurry	60
white rise, dunmurry	99
willowvale gardens, belfast	74
willowvale mews, belfast	3
wilmont park, dunmurry	5
woodbourne court, belfast	38
woodbourne crescent, belfast	12

### C. Ormiston

<b>Ormiston</b>	<b>10531</b>
abbey gardens, belfast	83
abbey park, belfast	189
abbey road, belfast	23
alder close, belfast	10
alford park, belfast	20
ardcarn drive, belfast	127
ardcarn green, belfast	18
ardcarn park, belfast	28
ardcarn way, belfast	28
ardgreenan crescent, belfast	19
ardvarna crescent, belfast	20
ardvarna park, belfast	34
ashbrook crescent, belfast	14
ashbrook drive, belfast	27
ashburn green, belfast	14
ashford green, belfast	16
ashmount grove, belfast	21
ashmount park, belfast	115
avonvale, belfast	15
ballygowan road, belfast	6
ballyhanwood road, belfast	5
barnetts chase, belfast	17
barnetts court mews, belfast	14
barnetts court, belfast	21
barnetts crescent, belfast	26
barnetts green, belfast	58
barnetts lodge, belfast	14
barnetts road, belfast	127
baroak lane, belfast	4
belmont drive, belfast	6
belmont mews, belfast	17
belmont road, belfast	184
bethany street, belfast	16

braeside grove, belfast	53
braniel crescent, belfast	44
braniel park, belfast	29
braniel way, belfast	2
briarwood park, belfast	29
bristow drive, belfast	11
brook meadow, gilnahirk, belfast	6
burghley mews, belfast	41
cabin hill gardens, belfast	62
cabin hill mews, belfast	16
cabin hill park, belfast	64
cairnburn avenue, belfast	22
cairnburn crescent, belfast	28
cairnburn dell, belfast	4
cairnburn drive, belfast	13
cairnburn gardens, belfast	38
cairnburn grange, belfast	8
cairnburn park, belfast	5
cairnburn road, belfast	28
campbell chase, belfast	7
carolhill drive, belfast	40
carolhill gardens, belfast	23
carolhill park, belfast	39
castlegowan crescent	22
Castlegowan Drive	11
Castlegowan Park	37
castlegowan place	25
castlegowan road	32
castlehill farm, belfast	13
castleview cottage gardens, belfast	33
castleview road, belfast	28
castleview terrace, belfast	26
cedar grove, holywood	138
charters avenue, belfast	4
church wynd, gilnahirk, belfast	6
churchland close, holywood	14
circular road, belfast	94
cloghan crescent, belfast	29
cloghan gardens, knock, belfast	12
cloghan mews, belfast	6
cloghan park, belfast	40
clonaver crescent north, belfast	34
clonaver crescent south, belfast	18
clonaver drive, belfast	24
clonaver park, belfast	17
cloverhill gardens, belfast	6



cloverhill park, belfast	28
cormorant park, belfast	20
creevy avenue, belfast	63
creevy way, belfast	6
croft court, belfast	12
dalry park, belfast	21
dehra grove, belfast	23
earls court, belfast	16
edgcumbe drive, belfast	26
edgcumbe gardens, belfast	54
edgcumbe park, belfast	15
edgcumbe view, belfast	9
elsmere heights, belfast	21
elsmere manor, belfast	9
elsmere park, belfast	27
enid drive, belfast	27
enid parade, belfast	55
fairway gardens, castlereagh	20
farmhurst green, belfast	43
farmhurst way, belfast	14
finchley drive, belfast	4
finchley gardens, belfast	10
finchley park, belfast	20
finchley vale, belfast	13
garnerville drive, belfast	27
garnerville gardens, belfast	57
garnerville grove, belfast	9
garnerville park, belfast	53
garnerville road, belfast	50
garranard manor, belfast	17
garranard park, belfast	21
geary road, belfast	50
gilnahirk rise, belfast	40
gilnahirk road, belfast	131
gilnahirk walk, belfast	22
glen ebor heights, belfast	4
glen ebor park, belfast	38
glen rise, belfast	18
glen road, castlereagh	41
glendarragh mews, belfast	37
glendarragh, belfast	57
glendhu grove, belfast	32
glendhu manor, belfast	64
glendhu park, belfast	34
glenlea grove, belfast	20
glenlea park, belfast	47

glenloch gardens, belfast	31
glenluce drive, belfast	60
glenluce gardens, belfast	11
glenluce green, belfast	13
glenluce walk, belfast	27
glenmachan avenue, belfast	11
glenmachan drive, belfast	23
glenmachan grove, belfast	12
glenmachan mews, belfast	5
glenmachan park, belfast	12
glenmachan road, belfast	12
glenmillan drive, belfast	16
glenmillan park, belfast	39
glenview avenue, belfast	42
gortgrib drive, belfast	22
gortin drive, belfast	12
gortin park, belfast	61
gortland avenue, belfast	9
gortland mews, belfast	16
gortland park, belfast	49
govan drive, belfast	11
granton park, belfast	6
green mount, belfast	14
greenlea gardens, belfast	8
hawthornden drive, belfast	26
hawthornden gardens, belfast	29
hawthornden gate, belfast	3
hawthornden grange	5
hawthornden lodge, belfast	15
hawthornden mews, belfast	18
hawthornden park, belfast	3
hawthornden road, belfast	58
hawthornden way, belfast	5
hazelbank court, belfast	15
helens lea, belfast	17
helgor park mews, belfast	20
helgor park, belfast	35
henderson court, holywood	37
hollywood road, belfast	62
kennel bridge, belfast	21
kilmakee park, belfast	39
kilmory gardens, belfast	54
kinraig avenue, belfast	24
kinedar crescent, belfast	13
kings brae, belfast	17
kings crescent, belfast	23

kings drive, belfast	31
kings link, belfast	12
kings park lane, belfast	6
kings park, belfast	13
kings road, belfast	253
kings vale, belfast	15
kingsdale park, belfast	76
kingsland drive, belfast	7
kingsland park, belfast	30
kingsway avenue, belfast	23
kingsway close, belfast	5
kingsway court, belfast	8
kingsway drive, belfast	10
kingsway gardens, knock, belfast	30
kingsway park, belfast	89
kingswood park, belfast	28
kinross avenue, belfast	177
kirn park, belfast	12
knockburn park, belfast	32
knockdarragh park, belfast	39
knockland park, belfast	22
knocklofty court, belfast	20
knocklofty park, belfast	60
knockmarloch park, belfast	19
knocknagoney avenue, belfast	64
knocknagoney drive, belfast	46
knocknagoney gardens, belfast	34
knocknagoney green, belfast	11
knocknagoney grove, belfast	18
knocknagoney park, belfast	78
knocknagoney road, belfast	24
knocknagoney way, belfast	4
knocktern gardens, belfast	15
laird park, belfast	28
laurelvale, belfast	7
leven close, belfast	15
leven crescent, belfast	16
leven drive, belfast	43
leven park, belfast	56
leven place, belfast	16
lochinver drive, belfast	49
lothian avenue, belfast	17
lower braniel road, belfast	206
lowland avenue, belfast	21
lowland gardens, belfast	14
lowland walk, belfast	10

marlfield drive, belfast	67
marlfield rise, belfast	7
marmont crescent, belfast	30
marmont drive, belfast	25
marmont park, belfast	78
massey avenue, belfast	34
massey court, belfast	29
massey green, belfast	5
massey park, belfast	25
melfort drive, belfast	110
middle braniel road, belfast	12
mill gate, belfast	10
motelands, belfast	25
moyne park, belfast	45
north sperrin, belfast	61
northfield rise, belfast	30
norwood avenue, belfast	63
norwood court, belfast	15
norwood crescent, belfast	18
norwood drive, belfast	62
norwood gardens, belfast	24
norwood grove, belfast	2
norwood park, belfast	15
old holywood road, belfast	105
orchard court, holywood	44
orchard lane, belfast	4
ormiston crescent, belfast	59
ormiston drive, belfast	22
ormiston parade, belfast	9
ormiston park, belfast	23
ormiston square, belfast	13
pembridge court, belfast	27
pirrie lane, belfast	3
pirrie road, belfast	1
quarry road, belfast	49
ravenswood crescent, belfast	36
ravenswood park, belfast	141
red hall lane	7
redburn court, holywood	4
richmond avenue, holywood	38
richmond close, holywood	15
richmond court, holywood	22
richmond heights, holywood	21
rocky road, gilnahirk, belfast	3
rosemount avenue, belfast	5
rosepark central, belfast	20

rosepark east, belfast	17
rosepark gardens, belfast	53
rosepark meadows, belfast	15
rosepark south, belfast	21
rosepark west, belfast	7
rosepark, belfast	78
roslin gardens, belfast	33
russell park, belfast	43
schomberg avenue, belfast	48
schomberg park, belfast	28
school court, belfast	22
shandon court, castlereagh	6
shandon heights, belfast	5
south sperrin, belfast	67
southland dale, belfast	99
sperrin drive, belfast	9
sperrin park, belfast	13
stoney road, belfast	12
stormont court, belfast	11
stormont mews, belfast	4
strathearn lane, belfast	45
strathearn mews, belfast	22
strathearn park, belfast	30
summerhill avenue, belfast	77
summerhill parade, belfast	19
summerhill park, belfast	42
sycamore grove, belfast	37
sydenham avenue, belfast	114
the cairns, belfast	4
the grange, belfast	5
the walled garden, belfast	36
thornely park, belfast	12
thornhill crescent, belfast	11
thornhill drive, belfast	40
thornhill grove, belfast	18
thornhill mews, belfast	12
thornhill parade, belfast	59
thornhill park, belfast	42
tillysburn drive, belfast	6
tillysburn grove, belfast	9
tillysburn park, belfast	56
tweskard lodge, belfast	16
tweskard park, belfast	47
upper braniel road, belfast	7
upper newtownards road, belfast	152
upperlands walk, belfast	14

vionville close, belfast	19
vionville court, belfast	22
vionville green, belfast	3
vionville heights, belfast	15
vionville park, belfast	20
vionville place, belfast	22
vionville rise, belfast	21
vionville view, belfast	8
vionville way, belfast	10
wandsworth crescent, belfast	21
wandsworth drive, belfast	3
wandsworth place, belfast	16
wandsworth road, belfast	117
warren grove, belfast	86
wayside close, belfast	10
whincroft road, belfast	84
whincroft way, belfast	46
wilshire drive, belfast	13
woodcroft heights, belfast	17
woodcroft rise, belfast	9
woodlands court, belfast	7
woodview drive, belfast	30
woodview place, belfast	24
woodview terrace, belfast	10